

# HIGH PRESSURE WATER BLASTERS

## CE40



Stainless steel pump-head.  
Integrated unloader valve.



Electrical box with main  
switch, overload relay &  
hour meter.



Stainless steel top-frame  
with gun rest / lance holder.



Galvanized frame with build  
in brake and solid wheels.



Integrated booster pump & filter  
systems w. low pressure shut  
down.



Model (60Hz):	CE40-400	CE40-500	CE40-800	CE40-1050	CE40-1380	CE40-1800
W.P. (Bar/PSI):	400 / 5800	500 / 7260	800 / 11600	1050 / 15225	1380 / 20000	1800 / 26100
Flow (LPM/GPM):	43.5 / 11.5	35 / 9.2	22 / 5.8	16 / 4	13.8 / 3.6	10 / 2.6
Model (50Hz):	CE40-400	CE40-550	CE40-800	CE40-1250	CE40-1380	CE40-2000
W.P. (Bar/PSI):	400 / 5800	550 / 7975	800 / 11600	1250 / 18125	1380 / 20000	2000 / 29000
Flow (LPM/GPM):	37 / 9.7	30 / 7.9	18 / 4.7	13 / 3.4	12 / 3.2	9.2 / 2.4
Electrical Spec.:						
Motor (Hp/Kw):	60Hz: 45 / 33    50Hz: 40 / 30					
Voltage (60/50Hz):	440 / 400					
Amperage (A):	57 / 57					
Dimensions (L x W x H): 1600 x 1050 x 1150mm, Weight: 650Kgs						

### Standard accessories incl. with each machine:

- 30m 4 core oil resistant electrical cable c/w plug.
- Hour meter for machine usage record.
- 20m 1250bar high pressure hose  
c/w 1/2" stainless steel female swivel.
- Trigger operated dump gun  
c/w 90cm stainless steel lance.
- Sapphire straight jet spraying nozzle.
- Service Video.

### Optional accessories for each model:

- 20m 1250bar high pressure hose  
c/w 1/2" stainless steel female swivel. (Extension hose).
- Rotating nozzle.
- Sand blasting kit c/w boron carbide nozzle.
- Mobile abrasive container.
- Spare part kit.



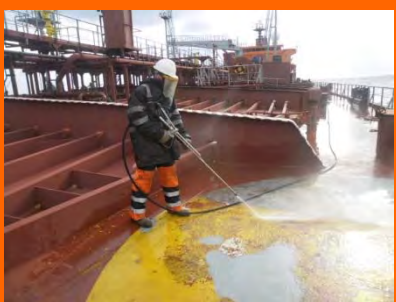
Single jet Rotating Nozzle



Ultra Impact Rotating Nozzle



Surface - Ultra Impact Nozzle



Surface Blasting



Surface – Sand blasting

# SAFETY GEAR (PPE)

	<p>Safety helmet c/w net visor and ear muff. Safety glasses are recommended to wear as well. Helmet: EN397. Net Visor: EN 1731:2006. Ear muff: EN 352-3:2002</p> <p>Part Number: 81600601</p>
	<p>Waterproof glove with protection for up to 500 bar pressure. The glove has a rough, sand patterned surface and the material itself provides lots of friction, all for the best grip on the tools. Supplied with separate inner glove in nylon for good comfort. Part Number: 81600669</p>
	<p>Water jetting boot for up to 1200 bar (17400 psi) will protect the foot and the lower part of leg against water jet penetration. ( Safety boots for up to 3000 bar (43500 psi) is available upon request)</p> <p>Available in size 43-45.</p>
	<p>Safety Apron - the full area of the Apron has built-in protection. Ideal to wear in warm environments. The position of the Apron can be changed with the adjustable neckband. The Apron comes in one size. Weight 1.4 kg / 3.0 lbs.</p> <p>Max pressure 1250 bar (18125 psi):Part Number : 81600648</p> <p>Max pressure 3000 bar (43500 psi):Part Number: 81600637</p>
	<p>Safety jacket and trousers with built-in protection in most areas. Jacket has integrated hand protection and the high trousers has adjustable shoulder support.</p> <p>Jacket 2.4kg - Trousers 2.4kg</p> <p>Two pressure ratings available up to 3000 bar (43500 psi) protection.</p>
	<p>Waterproof overall protect the operator only from spray, cold and flying debris. It does NOT deflect from direct jet impact. 190g PU/polyester - EN343 waterproof</p>
	<p>Hose protection. The gun is held near vital parts of the body the hose protection prevents injuries due to hose failure. Protects up to 3000 bar (43500psi). The adjustable strap holds the hose protection securely in place.</p>
	<p>Length 750mm – weight 1.25kg. – P/N: 81600626</p> <p>Length 1400mm – weight 2.30kg. – P/N: 81600617</p>
<p>Other safety gear available upon request.</p>	



CEX40 ATEX compliant EEx Unit for Zone II



# HIGH PRESSURE WATER BLASTERS



## CEX20



Stainless steel pump-head.  
Integrated unloader valve.



EEx electrical box with main  
switch, star delta starter &  
overload relay.



Earth Cable with Clamp.



Balanced lifting eye for crane.



Stainless steel frame with built  
in brake and solid wheels.



CEX20 Series

- ATEX compliant EEx equipped Units for Zone II use.

Model:	CEX20-200	CEX20-280	CEX20-350	CEX20-500
<b>Technical details:</b>				
<b>60Hz Version</b>				
W.P.: Bar/ Psi	170 / 2500	250 / 3600	350 / 5075	500 / 7250
Flow Lpm / Gpm	45 / 11.8	32 / 8.4	23 / 6	16 / 4.2
<b>50Hz Version</b>				
W.P.: Bar / Psi	200 / 2900	280 / 4060	350 / 5075	500 / 7250
Flow Lpm / Gpm	38 / 10	26 / 6.8	18 / 4.7	16 / 4.2
<b>Electrical Spec.</b>				
Motor Hp/ Kw	20 / 15	20 / 15	20 / 15	20 / 15
Voltage 60/50Hz	440 / 400	440 / 400	440 / 400	440 / 400
Amperage A	28 / 26	28 / 26	28 / 26	28 / 26
<b>Dimensions (L x W x H): 1085 x 500 x 1080mm</b>				
<b>Weight: 235Kgs</b>				

All models are CE marked & ATEX Approved.

### Standard accessories incl. with each machine:

- 30m 4 core oil resistant electrical cable.
- 20m 500bar high pressure hose  
c/w 1/2" stainless steel female swivel.
- Trigger operated dry shut gun  
c/w 80cm stainless steel lance.
- Harden stainless steel straight jet spraying nozzle.
- Service Video

### Optional accessories for each model:

- 20m 500bar high pressure hose  
c/w 1/2" stainless steel female swivel. (Extension hose).
- Rotating nozzle.
- Short lance.
- Safety gear.
- Spare part kit.

[www.denjet.com](http://www.denjet.com)

# SAFETY GEAR (PPE)



Single jet Rotating Nozzle



Blasting- Rotating Nozzle



Surface - Rotating Nozzle  
500bar



CA12-250 Air Powered Blaster  
Atex compliant Atex II cat.2G&D T5

	<p>Safety helmet c/w net visor and ear muff. Safety glasses are recommended to wear as well. Helmet: EN397. Net Visor: EN 1731:2006. Ear muff: EN 352-3:2002</p> <p>Part Number: 81600601</p>
	<p>Waterproof glove with protection for up to 500 bar pressure. The glove has a rough, sand patterned surface and the material itself provides lots of friction, all for the best grip on the tools. Supplied with separate inner glove in nylon for good comfort. Part Number: 81600669</p>
	<p>Water jetting boot for up to 800 bar (11600 psi) will protect the foot and the lower part of leg against water jet penetration.</p> <p>Available in size 42-46.</p>
	<p>Safety Apron - the full area of the Apron has built-in protection up to 500 bar (7250 psi). Ideal to wear in warm environments. The position of the Apron can be changed with the adjustable neckband. The Apron comes in one size. Weight 0.7 kg / 1.5 lbs.</p> <p>Part Number: 81600665</p>
	<p>Safety jacket and trousers with built-in protection up to 500 bar (7250 psi) in most areas. Thoughtful details such as openable ventilation in the armpit, comfortable cuffs, adjustable hood, elastic waist line and various pockets.</p> <p>Jacket 1.6kg - Trousers 1.3kg</p> <p>Available in size Medium, Large and X-large.</p>
	<p>Waterproof overall protect the operator only from spray, cold and flying debris. It does NOT deflect from direct jet impact. 190g PU/polyester - EN343 waterproof</p> <p>Size L - Part Number: 81600632 Size XL - Part Number: 81600609</p>
	<p>Hose protection. The gun is held near vital parts of the body the hose protection prevents injuries due to hose failure. Protects up to 500 bar (7250psi). The adjustable strap holds the hose protection securely in place.</p> <p>Length 750mm – weight 0.2kg.</p> <p>Part Number: 81600686</p>
<p>Other safety gear available upon request.</p>	



CEX40 Series

- ATEX compliant EEx equipped Units for Zone II use.



# HIGH PRESSURE WATER BLASTERS



## CEX40



Stainless steel pump-head.  
Integrated unloader valve.



EEx electrical box with main  
switch, star delta starter &  
overload relay.



Cut-off switch for low inlet  
water



Earth Cable with Clamp.



Integrated booster pump & filter  
systems w. low pressure shut  
down.



CEX40 Series

- ATEX compliant EEx equipped Units for Zone II use.

Model (60Hz):	CEX40-400	CEX40-500	CEX40-800	CEX40-1050	CEX40-1380	CEX40-1800
W.P. (Bar/PSI):	400 / 5800	500 / 7260	800 / 11600	1050 / 15225	1380 / 20000	1800 / 26100
Flow (LPM/GPM):	43.5 / 11.5	35 / 9.2	22 / 5.8	16 / 4	13.8 / 3.6	10 / 2.6
Model (50Hz):	CE40-400	CE40-550	CE40-800	CE40-1250	CE40-1380	CE40-2000
W.P. (Bar/PSI):	400 / 5800	550 / 7975	800 / 11600	1250 / 18125	1380 / 20000	2000 / 29000
Flow (LPM/GPM):	37 / 9.7	30 / 7.9	18 / 4.7	13 / 3.4	12 / 3.2	9.2 / 2.4
Electrical Spec.:						
Motor (Hp/Kw):	60Hz: 45 / 33    50Hz: 40 / 30					
Voltage (60/50Hz):	440 / 400					
Amperage (A):	57 / 57					
Dimensions (L x W x H): 1600 x 1050 x 1150mm, Weight: 890Kgs						

All models are CE marked & ATEX Approved.

### Standard accessories incl. with each machine:

- 30m 4 core oil resistant electrical cable.
- 20m 1250bar high pressure hose  
c/w 1/2" stainless steel female swivel.
- Trigger operated dump gun  
c/w 90cm stainless steel lance.
- Sapphire straight jet spraying nozzle.
- Service Video.

### Optional accessories for each model:

- 20m 1250bar high pressure hose  
c/w 1/2" stainless steel female swivel. (Extension hose).
- Rotating nozzle.
- Short lance.
- Safety gear.
- Spare part kit.

[www.denjet.com](http://www.denjet.com)



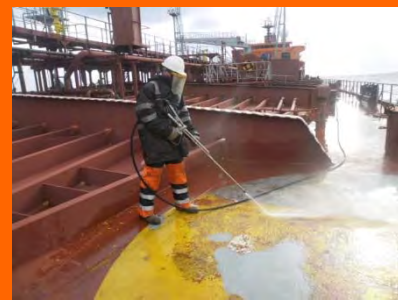
Single jet Rotating Nozzle



Ultra Impact Rotating Nozzle



Surface - Ultra Impact Nozzle



Surface Blasting



CA12-250 Air Powered Blaster  
Atex compliant Atex II cat.2G&D T5

## SAFETY GEAR (PPE)

	<p>Safety helmet c/w net visor and ear muff. Safety glasses are recommended to wear as well. Helmet: EN397. Net Visor: EN 1731:2006. Ear muff: EN 352-3:2002</p> <p>Part Number: 81600601</p>
	<p>Waterproof glove with protection for up to 500 bar pressure. The glove has a rough, sand patterned surface and the material itself provides lots of friction, all for the best grip on the tools. Supplied with separate inner glove in nylon for good comfort. Part Number: 81600669</p>
	<p>Water jetting boot for up to 1200 bar (17400 psi) will protect the foot and the lower part of leg against water jet penetration. ( Safety boots for up to 3000 bar (43500 psi) is available upon request)</p> <p>Available in size 43-45.</p>
	<p>Safety Apron - the full area of the Apron has built-in protection. Ideal to wear in warm environments. The position of the Apron can be changed with the adjustable neckband. The Apron comes in one size. Weight 1.4 kg / 3.0 lbs.</p> <p>Max pressure 1250 bar (18125 psi):Part Number : 81600648 Max pressure 3000 bar (43500 psi):Part Number: 81600637</p>
	<p>Safety jacket and trousers with built-in protection in most areas. Jacket has integrated hand protection and the high trousers has adjustable shoulder support.</p> <p>Jacket 2.4kg - Trousers 2.4kg</p> <p>Two pressure ratings available up to 3000 bar (43500 psi) protection.</p> <p>Available in size small/Medium and large/X-large.</p>
	<p>Waterproof overall protect the operator only from spray, cold and flying debris. It does NOT deflect from direct jet impact. 190g PU/polyester - EN343 waterproof</p> <p>Size L - Part Number : 81600632 Size XL - Part Number : 81600609</p>
	<p>Hose protection. The gun is held near vital parts of the body the hose protection prevents injuries due to hose failure. Protects up to 3000 bar (43500psi). The adjustable strap holds the hose protection securely in place.</p> <p>Length 750mm - weight 1.25kg. - P/N: 81600626 Length 1400mm - weight 2.30kg. - P/N: 81600617</p>
<p>Other safety gear available upon request.</p>	

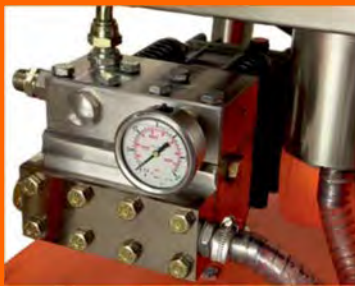


CEX20 Series

- ATEX compliant EEx equipped Units for Zone II use.

# HIGH PRESSURE WATER BLASTERS

## MASTERMARINER CE20-500



Stainless steel pump-head.  
Integrated unloader valve.



Electrical box with main  
switch, overload relay &  
hour meter.



Molded Polypropylene  
water tank and stainless  
steel top-frame.



Balanced lifting eye for  
crane. Shown with optional  
toolbox installed.



Stainless steel base frame with  
built in brake and solid wheels.



Model:	CE20-200	CE20-280	CE20-350	CE20-400	CE20-500
<b>Technical details:</b>					
<b>60Hz Version</b>					
W.P.: Bar/ Psi	170 / 2500	250 / 3600	350 / 5075	N/A	500 / 7250
Flow Lpm / Gpm	45 / 11.8	32 / 8.4	23 / 6		16 / 4.2
<b>50Hz Version</b>					
W.P.: Bar / Psi	200 / 2900	280 / 4060	350 / 5075	400 / 5800	500 / 7250
Flow Lpm / Gpm	38 / 10	26 / 6.8	18 / 4.7	20 / 5.2	16 / 4.2
<b>Electrical Spec.</b>					
Motor Hp/ Kw	20 / 15	20 / 15	20 / 15	20 / 15	20 / 15
Voltage 60/50Hz	440 / 400	440 / 400	440 / 400	400 50 Hz	440 / 400
Amperage A	28 / 26	28 / 26	28 / 26	26	28 / 26
<b>Dimensions (L x W x H): 950 x 500 x 850mm</b>					
<b>Weight: 170Kgs</b>					

### Standard accessories incl. with each machine:

- 15m 4 core oil resistant electrical cable c/w reefer plug.
- Hour meter for machine usage record.
- 20m 500bar high pressure hose  
c/w 1/2" stainless steel female swivel.
- Trigger operated dry shut gun  
c/w 80cm stainless steel lance.
- Harden stainless steel straight jet spraying nozzle.

### Optional accessories for each model:

- 20m 500bar high pressure hose  
c/w 1/2" stainless steel female swivel. (Extension hose).
- Rotating nozzle.
- Sand blasting kit c/w boron carbide nozzle.
- Mobile abrasive container.
- Spare part kit.



CEX20 ATEX compliant EEX Unit for Zone II



Hot Box – 500bar



Single jet Rotating Nozzle



Surface - Rotating Nozzle 500bar



Surface – Sand blasting

# SAFETY GEAR (PPE)

	<p>Safety helmet c/w net visor and ear muff. Safety glasses are recommended to wear as well. Helmet: EN397. Net Visor: EN 1731:2006. Ear muff: EN 352-3:2002</p> <p>Part Number: 81600601</p>
	<p>Waterproof glove with protection for up to 500 bar pressure. The glove has a rough, sand patterned surface and the material itself provides lots of friction, all for the best grip on the tools. Supplied with separate inner glove in nylon for good comfort. Part Number: 81600669</p>
	<p>Water jetting boot for up to 800 bar (11600 psi) will protect the foot and the lower part of leg against water jet penetration.</p> <p>Available in size 42-46.</p>
	<p>Safety Apron - the full area of the Apron has built-in protection up to 500 bar (7250 psi). Ideal to wear in warm environments. The position of the Apron can be changed with the adjustable neckband. The Apron comes in one size. Weight 0.7 kg / 1.5 lbs.</p> <p>Part Number: 81600665</p>
	<p>Safety jacket and trousers with built-in protection up to 500 bar (7250 psi) in most areas. Thoughtful details such as openable ventilation in the armpit, comfortable cuffs, adjustable hood, elastic waist line and various pockets.</p> <p>Jacket 1.6kg - Trousers 1.3kg</p> <p>Available in size Medium, Large and X-large.</p>
	<p>Waterproof overall protect the operator only from spray, cold and flying debris. It does NOT deflect from direct jet impact. 190g PU/polyester - EN343 waterproof</p> <p>Size L - Part Number: 81600632 Size XL - Part Number: 81600609</p>
	<p>Hose protection. The gun is held near vital parts of the body the hose protection prevents injuries due to hose failure. Protects up to 500 bar (7250psi). The adjustable strap holds the hose protection securely in place.</p> <p>Length 750mm – weight 0.2kg.</p> <p>Part Number: 81600686</p>
<p>Other safety gear available upon request.</p>	



Plug & Play Package



TST050122



# HIGH PRESSURE CLEANER



## CE08-200



High pressure quick disconnecting coupling.



Single barrel lance with Rotating nozzle.



Single barrel lance with Sand blasting kit c/w boron carbide nozzle.



Drain cleaning nozzle.



Chemical injector.



Model:	W.P. (Bar/PSI):	Flow (LPM/GPM):	Electrical Spec.:	Motor (Hp/Kw):	Voltage (V/Hz):	Amperage (A):
CE08-200	200 / 2900	16 / 4.2	3 Phase	7.4 / 5.5	440 / 60	12.30
Dimensions (L x W x H): 690 x 560 x 900mm, Weight: 70Kgs						

### Standard accessories incl. with each machine:

- 10m 4 core oil resistant electrical cable.
- 10m 350bar high pressure hose  
c/w high pressure quick disconnecting coupling.
- Trigger operated dry shut gun with quick coupling connection for lance.
- Double barrel lance with pressure regulator & dual spray nozzles.
- Lance with quick coupling connection.
- Harden stainless steel fan jet spraying nozzle.
- Low pressure fan jet nozzle for chemical spraying.

### Optional accessories for each model:

- 20m 350bar high pressure hose  
c/w high pressure quick disconnecting coupling (Extension hose).
- Single barrel lance with Rotating nozzle.
- Single barrel lance with Sand blasting kit c/w boron carbide nozzle.
- Mobile abrasive container.
- Chemical injector.
- Drain cleaning hose with nozzle.
- Spare part kit.

# DEN-JET WATER BLASTERS ON BOARD MAINTENANCE



Blasting - Rotating  
Nozzle



CE20 Series



CEX20 Series



Surface Blasting



- ATEX compliant EEx equipped Units for Zone II use.

**Den-Jet**  
... there is  
no  
**Substitute**



Ultra Impact Rotating  
Nozzle



CEX40 Series



Surface - Ultra Impact  
Rotating Nozzle

- **Faster**
- **Cheaper**
- **Better**
- **Worldwide Service**



Surface – Sand Blasting



CE40 Series



CA12 Series

TST260819

